



www.bikefixtation.com

2647 37th Ave. S Unit 1 Minneapolis MN 55406
Phone: 612-568-3498 • E-mail: info@bikefixtation.com

Installation Instructions for Bike Fixtation Public Toolbox Manual RevB



Space Setbacks:

The Public Toolbox is very versatile in where it can be installed. We recommend that it is placed in a location that allows a bicycle to access it either perpendicular or horizontal to the wall. See Figure 1 below. It is possible to mount a pump or wheel chock within this setback region.

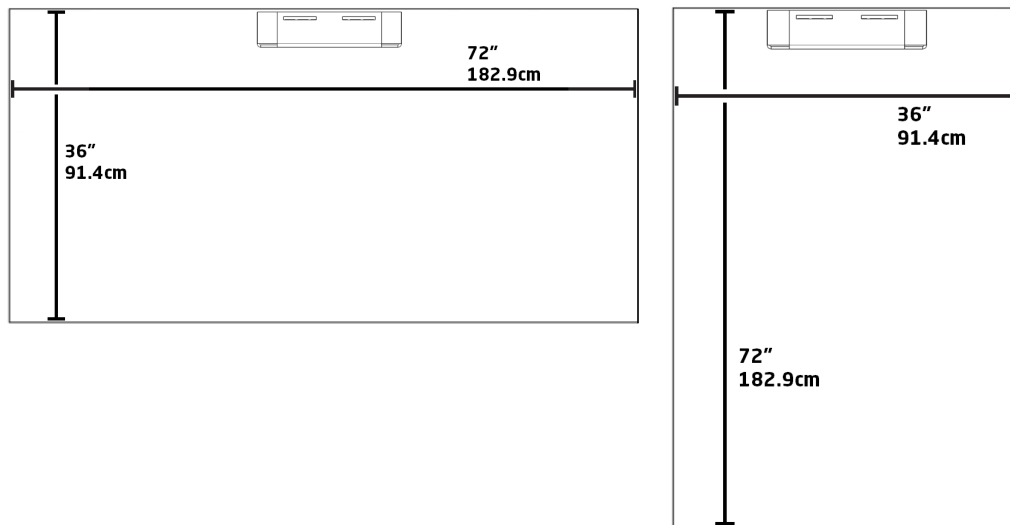


Figure 1: Optimal setback options

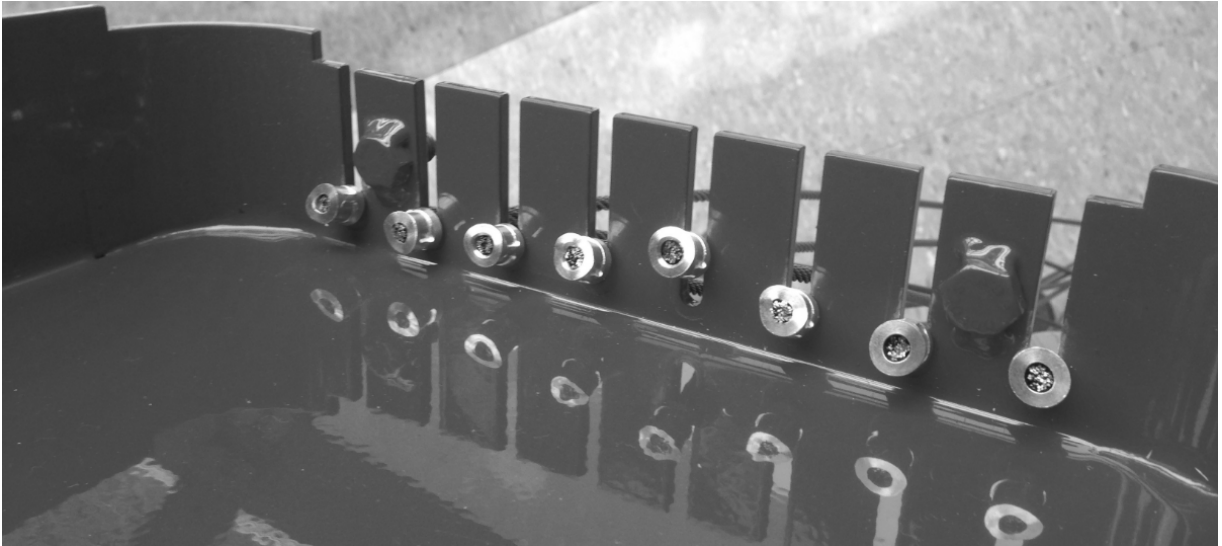
Typical Tools Needed for Installation

Drill and drill bits
 Phillips Screwdriver
 Mounting Hardware (location dependent)
 Penta Nut Socket (included)
 3/8" drive ratchet
 Marker or Pencil
 Level
 Tape Measure

Wall Mounting or Vending Machine Mounting

1. Identify mounting location. Be sure to follow setbacks. The base of the toolbox should be mounted greater than 55" (140cm) from the ground. If installing on a vending machine, mount in a position that does not inhibit the door opening (we usually mount on the left side of the machine).
2. Choose your mounting surface and fasteners.
 - a. If mounting to sheet metal, we recommend using #14 sheet metal screws no longer than 3/4" (20mm). If mounting into concrete, we recommend using a 1/4" masonry screw.
 - b. If mounting into wood framing, we recommend using #14 wood screws.
 - c. If installing into drywall, we would recommend drywall toggle anchor (typically rated to 100+ lbs. each) that uses at least a #12 screw size (and installing all 4).

- d. If installing into a stud wall, it is possible to use a #14 wood into 1 stud and toggle anchors into the other 2 holes that do not line up with a stud.
3. Once the back plate is secured, load the tools to the front cover as shown.



4. Lift the front cover onto the back plate so that the tabs fit into the slots.



5. Install and tighten penta nuts. Be careful not to over tighten.



Optional Strike Plate



1. Locate the strike plate directly below the toolbox at a distance of 2" (5cm) off the floor.
2. If mounting to sheet metal, we recommend using #14 sheet metal screws no longer than 3/4" (20mm). If mounting into concrete, we recommend using a 1/4" masonry screw. If mounting into wood framing, we recommend using #14 wood screws.